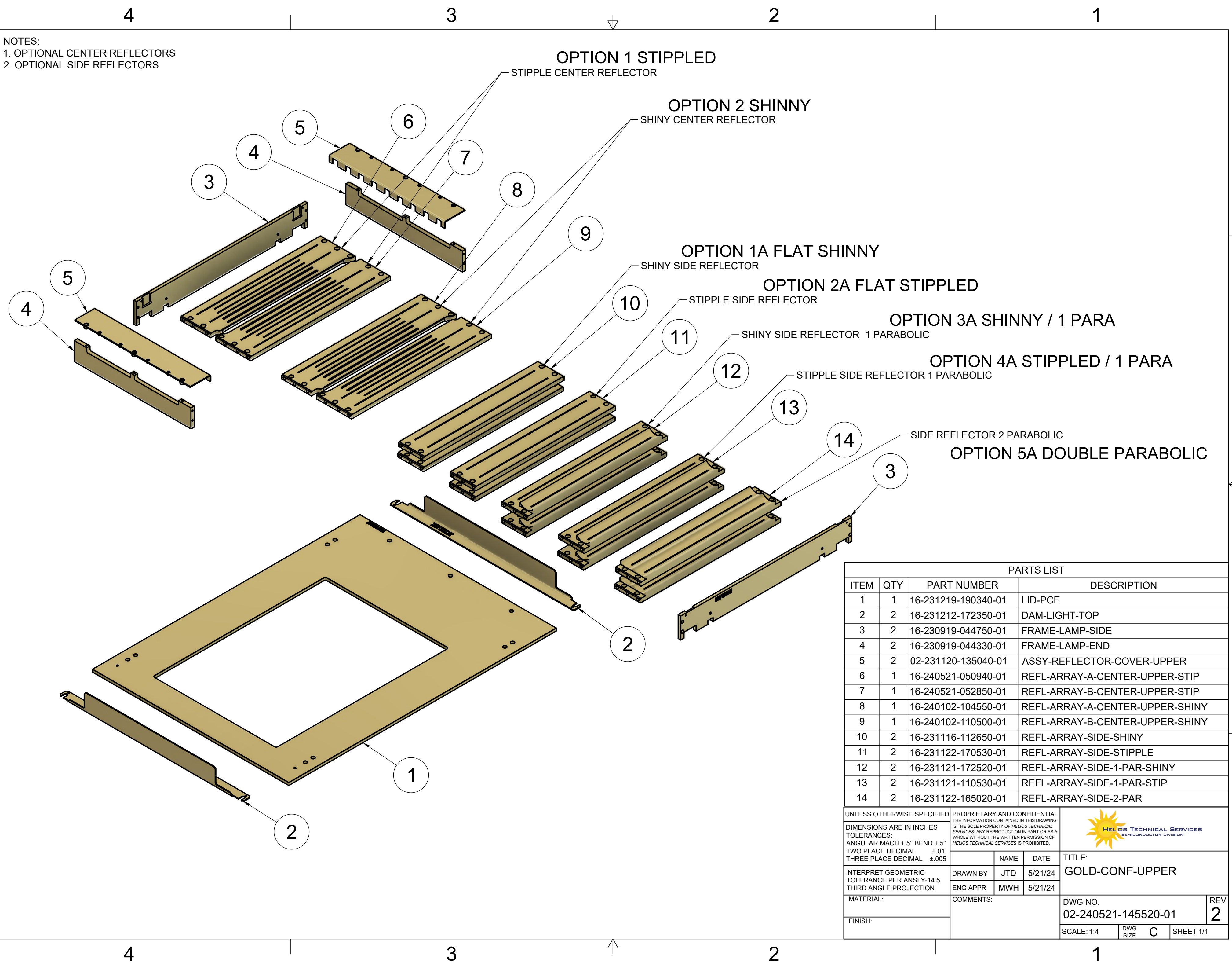



NOTES:  
 1. OPTIONAL CENTER REFLECTORS  
 2. OPTIONAL SIDE REFLECTORS



PARTS LIST			
ITEM	QTY	PART NUMBER	DESCRIPTION
1	1	16-231219-190340-01	LID-PCE
2	2	16-231212-172350-01	DAM-LIGHT-TOP
3	2	16-230919-044750-01	FRAME-LAMP-SIDE
4	2	16-230919-044330-01	FRAME-LAMP-END
5	2	02-231120-135040-01	ASSY-REFLECTOR-COVER-UPPER
6	1	16-240521-050940-01	REFL-ARRAY-A-CENTER-UPPER-STIP
7	1	16-240521-052850-01	REFL-ARRAY-B-CENTER-UPPER-STIP
8	1	16-240102-104550-01	REFL-ARRAY-A-CENTER-UPPER-SHINY
9	1	16-240102-110500-01	REFL-ARRAY-B-CENTER-UPPER-SHINY
10	2	16-231116-112650-01	REFL-ARRAY-SIDE-SHINY
11	2	16-231122-170530-01	REFL-ARRAY-SIDE-STIPPLE
12	2	16-231121-172520-01	REFL-ARRAY-SIDE-1-PAR-SHINY
13	2	16-231121-110530-01	REFL-ARRAY-SIDE-1-PAR-STIP
14	2	16-231122-165020-01	REFL-ARRAY-SIDE-2-PAR

UNLESS OTHERWISE SPECIFIED		PROPRIETARY AND CONFIDENTIAL THE INFORMATION CONTAINED IN THIS DRAWING IS THE SOLE PROPERTY OF HELIOS TECHNICAL SERVICES. ANY REPRODUCTION IN PART OR AS A WHOLE WITHOUT THE WRITTEN PERMISSION OF HELIOS TECHNICAL SERVICES IS PROHIBITED.		 HELIOS TECHNICAL SERVICES SEMICONDUCTOR DIVISION
DIMENSIONS ARE IN INCHES TOLERANCES: ANGULAR MACH ± 5° BEND ± .5° TWO PLACE DECIMAL ±.01 THREE PLACE DECIMAL ±.005		DRAWN BY JTD 5/21/24 ENG APPR MWH 5/21/24	TITLE: <b>GOLD-CONF-UPPER</b>	
INTERPRET GEOMETRIC TOLERANCE PER ANSI Y-14.5 THIRD ANGLE PROJECTION		COMMENTS:		DWG NO. <b>02-240521-145520-01</b>
MATERIAL: FINISH:		SCALE: 1:4		REV <b>2</b>
		DWG SIZE C		SHEET 1/1